

Polylogic Change Manager 4.6

Support Package 11

May 2005



Table of Contents

1.Rename YPCK to "Polylogic Change Manager".....	3
2.Fix: show all post-signoff steps in tranport plan.....	3
3.Enhance work-package header display.....	3
4.Fix: reset of WP transport flag when removing change-request from work-package.....	3
5.Fix: Impossible to maintain classes when no active classes exist.....	3
6.Fix: keep radio-button position during task selection.....	4
7.Fix: no comment prompt when creating a step in a sign-off method.....	4
8.Fix: Correct texts in import queue review.....	4
9.Fix transport shipping with unicode systems.....	4
10.Fix CNTL_ERROR in cross-system work-package ALV report.....	4
11.Fixes and enhancements in system discovery.....	4
12.Enhancement: new option to suppress released work-packages in cross-system report.....	5
13.Fix Minor icon and text corrections.....	5
14.Enhancement: TMS and CTS project compatibility.....	5
15.Fix prerequisite selection in sign-of definition.....	5
16.Enhancement: allow retry when checking password.....	6
17.Enhancement: Transport action/event logging.....	6

1. Rename YPCK to "Polylogic Change Manager"

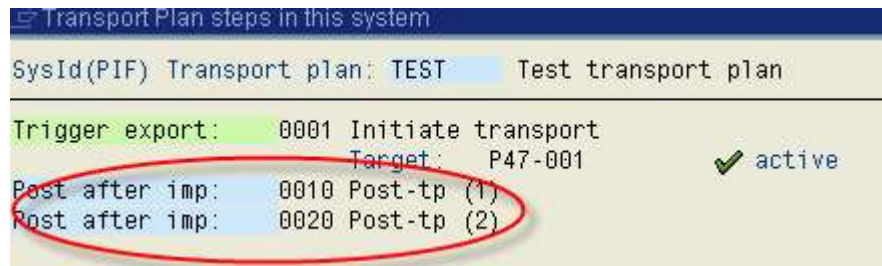
As part of a general branding initiative of Polylogic Informatique, the "work-package manager" software add-on has been renamed.

The logo for Polylogic Change Manager, featuring the text "Polylogic Change Manager" in a blue, italicized font, enclosed in a thin blue border.

2. Fix: show all post-signoff steps in transport plan

In transport-plan maintenance, when the option "show signoffs" is used only the first post-transport-signoff was shown.

This correction causes all such sign-offs to be displayed.

A screenshot of a software interface showing transport plan steps. The title bar reads "Transport Plan steps in this system". Below it, there's a header "SysId(PIF) Transport plan: TEST Test transport plan". The main content is a table with columns for step type, ID, description, and status. The first row is "Trigger export: 0001 Initiate transport" with a status of "active" (indicated by a green checkmark). The second and third rows are "Post after imp: 0010 Post-tp (1)" and "Post after imp: 0020 Post-tp (2)", both of which are circled in red in the original image.

SysId(PIF)	Transport plan	Test transport plan	
Trigger export:	0001	Initiate transport	active
Post after imp:	0010	Post-tp (1)	
Post after imp:	0020	Post-tp (2)	

3. Enhance work-package header display

For authorised users, it is now possible to go directly to the dialogue to patch a work-package header, when displaying the work-package header.

4. Fix: reset of WP transport flag when removing change-request from work-package

When removing a change-request from a work-package, the indicator that identifies the change-request as a "work-package transport" is lost.

This indicator is important for determining the "last wptp" when enabling work-package reduction.

5. Fix: Impossible to maintain classes when no active classes exist

If there are no active work-package classes, the maintenance program did not display any report, and just returns.

This made it impossible to maintain any classes.

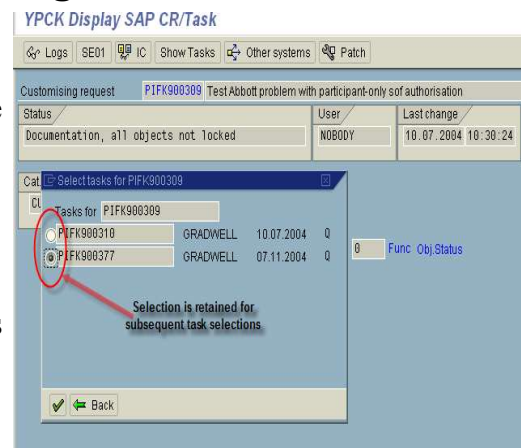
6.Fix: keep radio-button position during task selection.

When displaying a SAP change-request, and choosing the "show tasks" option, the tasks are displayed in a popup window with radio buttons to choose which one to display.

After leaving the display of the task, the task selection popup is redisplayed, but the radio-button previously chosen is lost.

This is inconvenient of a one-by-one search of tasks is being done, and if they are numerous; the user risks losing his place.

Corrected.



7.Fix: no comment prompt when creating a step in a sign-off method

When creating a sign-off step, there was no field for the sign-off comment prompt.

Corrected.

8.Fix: Correct texts in import queue review

The import queue overview program was modelled on the export queue overview, and not all texts and messages were updated correctly.

Corrected.

9.Fix transport shipping with unicode systems

A coding oversight left a character-type field active for the binary file transfer used by the transport shipping. This causes an incorrect conversion of the character to/from unicode when it is not required, and can cause transport import failures.

Corrected.

10.Fix CNTL_ERROR in cross-system work-package ALV report

The report "WPs across systems", YPCK069V, has an option to view the report using the Abap List Viewer (ALV).

When ending the ALV view, the program short-dumps with CNTL_ERROR.

Corrected.

11.Fixes and enhancements in system discovery

The list of RFC connections did not respond to page-up/down, but only windows scroll-bar usage.

Corrected:

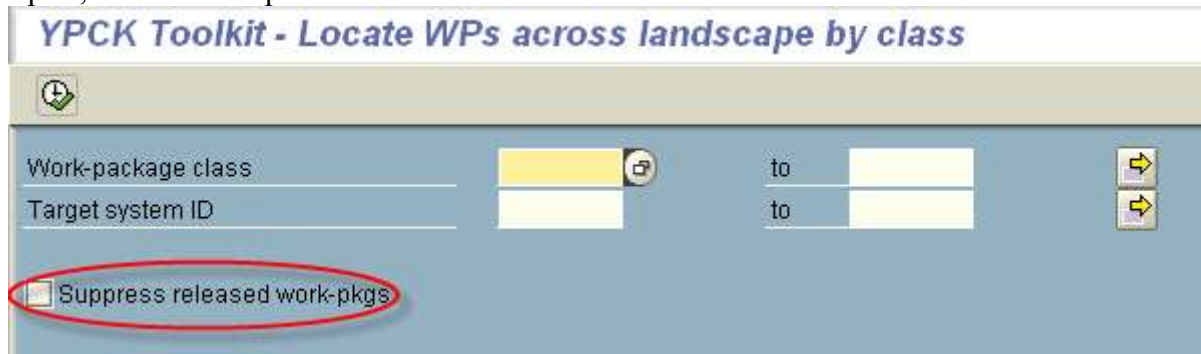
- handle page-up and down in discover system selection.

Plus, various enhancements in discover dialogue:

- fix inadvertant upper-case translation of destination names.
- add titlebar showing current system-id
- "find" function when selecting RFC destinations to test
- show results of 'discover' RFC call

12.Enhancement: new option to suppress released work-packages in cross-system report

An option to be able to select/suppress inactive work-package is the "WPs across systems" report, in both the report and ALV versions.



13.Fix Minor icon and text corrections

Some icons and texts that were incorrect or misleading have been corrected

14.Enhancement: TMS and CTS project compatibility

For some complex TMS/CTS implementations, the *Polylogic Change Manager* needs some changes to support and enhance the compatibility with these SAP tools.

- the target field is expanded to 10 character to support "extended transport control" and transport groups.
- new parameter FORCE_TMS_TARGET to impose a predefined target layer instead of the default layer from TMS. This facilitates the separation of YPCK transport planning from automated TMS transports.
- handling of unassigned requests can now be selected and filtered by CTS project.

15.Fix prerequisite selection in sign-of definition

This corrects the selection of prerequisite sign-off sequence numbers to those for the specified sign-off type.

16.Enhancement: allow retry when checking password

With password validation active, the user was only prompted once for his password.

This enhancement allows retries upto the maximum specified in the SAP profile parameter.



17.Enhancement: Transport action/event logging

Transport actions and events usually occurs in background processing, which requires that the job logs and spool be available for analysis.

This is not normally the case for jobs that have been deleted (eg. After job reorg).

Also, online executions of the export/import jobs produce results that are only visible to the online user who executes the programs.

To provide increased visibility of the transport actions/events, the major points in processing are now logged in the work-package log.

YPCCK 4.6 - List log messages for work-package

Date	Time	Msgid	Sev.	St	Userid	Log Message
28.01.2005	23:42:45	0001	I		GRADWELL	Work-package expired - alert flag set
24.04.2005	16:39:07	0010	I		GRADWELL	Target: SysId = P47 , client = 001
24.04.2005	16:39:20	0007	I		GRADWELL	Export transport number: PIFK900505
24.04.2005	16:39:55	0010	I		GRADWELL	Target: SysId = P47 , client = 001
24.04.2005	17:23:56	0007	I		GRADWELL	Export transport number: PIFK900505
24.04.2005	17:24:10	0010	I		GRADWELL	Target: SysId = P47 , client = 001
24.04.2005	17:25:13	0013	I		GRADWELL	Import complete for system P47
24.04.2005	17:31:05	0013	I		GRADWELL	Import complete for system P47
24.04.2005	17:31:05	0015	I		GRADWELL	All imports processed
24.04.2005	17:31:05	0006	I		GRADWELL	Posting signoff: Sysid= PIF , Type = T , Sequence = T , Approval=
24.04.2005	17:31:05	0006	I		GRADWELL	Posting signoff: Sysid= PIF , Type = T , Sequence = T , Approval=
24.04.2005	17:31:05	0016	I		GRADWELL	Transport complete
24.04.2005	17:41:39	0007	I		GRADWELL	Export transport number: PIFK900505
24.04.2005	17:41:53	0010	I		GRADWELL	Target: SysId = P47 , client = 001
24.04.2005	17:45:16	0013	I		GRADWELL	Import complete for system P47
24.04.2005	17:45:16	0015	I		GRADWELL	All imports processed
24.04.2005	17:45:16	0006	I		GRADWELL	Posting signoff: Sysid= PIF , Type = T , Sequence = 0010 , Approval= Y
24.04.2005	17:45:16	0006	I		GRADWELL	Posting signoff: Sysid= PIF , Type = T , Sequence = 0020 , Approval= Y
24.04.2005	17:45:16	0016	I		GRADWELL	Transport complete
01.05.2005	22:47:34	0010	I		GRADWELL	Target: SysId = P47 , client = 001
01.05.2005	22:47:40	0007	I		GRADWELL	Export transport number: PIFK900505
01.05.2005	22:47:56	0010	I		GRADWELL	Target: SysId = P47 , client = 001
01.05.2005	23:08:55	0013	I		GRADWELL	Import complete for system P47
01.05.2005	23:08:55	0015	I		GRADWELL	All imports processed
01.05.2005	23:08:55	0006	I		GRADWELL	Posting signoff: Sysid= PIF , Type = T , Sequence = 0010 , Approval= Y
01.05.2005	23:08:55	0006	I		GRADWELL	Posting signoff: Sysid= PIF , Type = T , Sequence = 0020 , Approval= Y
01.05.2005	23:08:55	0016	I		GRADWELL	Transport complete