

# Work-package Manager 4.6

Support Package 10

March 2005



## Table of Contents

1 Fix unassigned CR when undefined user specified.....	3
2 Fix: include tasks in WP last-change determination .....	3
3 Fix incorrect return-code determination for export .....	3
4 Fix display of empty sign-off window.....	3
5 Fix error "no memory for CUA processor" in tp monitor.....	3
6 Fix handling of step deletion in transport-plan maintenance.....	3
7 Fix: tp monitor to recognise RDDEXECL job.....	4
8 Enhancement to filters: use icons to identify public/private filters.....	4
9 Enhancement: work-package expiration .....	4
10 Enhancement: Multiple post-tp sign-offs.....	5
11 Enhancement: prompt for sign-off comment. ....	6
12 Enhancement: tp-plan display to show active/inactive systems.....	7
13 Enhancement: new exit for post-transport handling .....	7
14 Enhancement: new report of WPs by reset comment.....	8

## **1 Fix unassigned CR when undefined user specified**

When creating a work-package and change-request(s) at the same time sometimes one of the userids provided doesn't exist in the current client.

The input is corrected - omitting the undefined user - and the work-package is created.

But, the SAP change-request is also created AND unattached to the work-package.

This has been corrected.

## **2 Fix: include tasks in WP last-change determination**

The function module Y\_PCK\_READ\_YPCKH determines the last-change date for a work-package from the last-change date of its contents. It is possible that a SAP task is changed but the owning CR is not. The latest change date and time is that of the task.

The function module has been extended to take the last change date and time of the tasks into account.

## **3 Fix incorrect return-code determination for export**

When the transport plan exports a transport, it determines the return-code from table TPLOG. If several exports are done in a single day, and one of them had errors, abap YPCK0900 determines that all exports have a problem - even if this is not the case.

The correction is to include the export time in the selection from table TPLOG.

## **4 Fix display of empty sign-off window**

If double-clicking in a specific column of the main display, an empty sign-off status screen was displayed. This has been corrected.

## **5 Fix error "no memory for CUA processor" in tp monitor**

After about 20,000 iterations, the transport monitor fails with the error "no memory for CUA processor". PF-STATUS exclude table EXCL is not emptied for each iteration, and so grows continuously.

This has been corrected.

## **6 Fix handling of step deletion in transport-plan maintenance**

In YPCK0689, when attempting to delete a transport plan step, there is a check to see if there are any transport targets for the step being deleted. The check works and issues a message that the step cannot be deleted because there are still associated targets.

But, after acknowledging the message, the user can continue and delete the step anyway. This leaves the targets as orphans and prevents deletion of the transport plan.

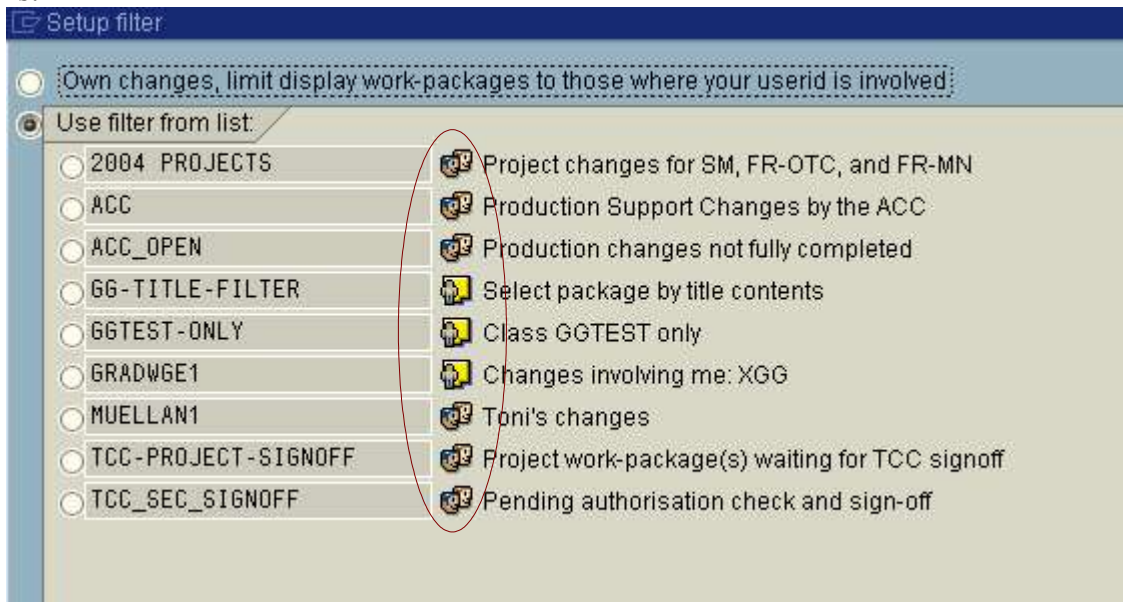
This has been corrected.

## 7 Fix: tp monitor to recognise RDDEXECL job

In the transport monitor, the description for transport job RDDEXECL has been changed to: "Method execution"

## 8 Enhancement to filters: use icons to identify public/private filters

When selecting a filter, the display now identifies which are public (global) or private by using icons:

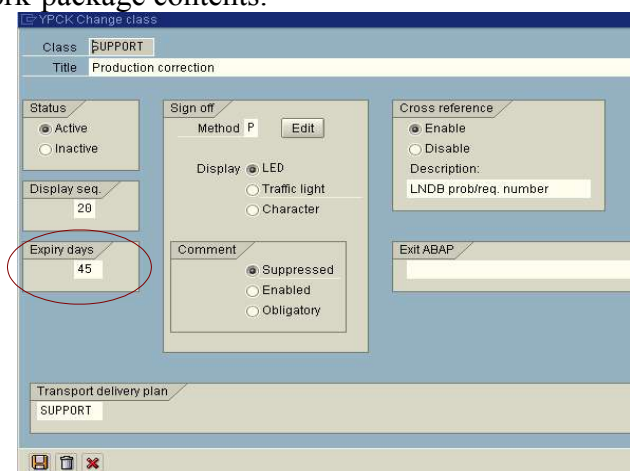


## 9 Enhancement: work-package expiration

Sometimes work-packages are kept open long past their usefulness. A class-specific validity period can now be used to have work-packages "expire".

The date used to determine if a work-package has expired is the latest of the work-package header change and the change dates of the work-package contents.

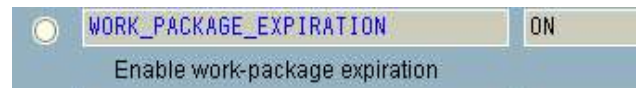
Work-package class maintenance



Expiration occurs in each system individually; there is no cross-system expiration. So, if a package expires in a target system, but not in the source system (as it is still being worked), then the transport to the target system will, effectively, un-expire it. The last-change date of the contents will have changed, and the count-down will start again.

Removing the alert indicator set by expiration changes the last-change date for the work-package header, and extends the lifetime of the work-package for a further expiration period.

Parameter WORK\_PACKAGE\_EXPIRATION when set to 'yes' or 'on' activates the expiry checking and expiration of work-packages.

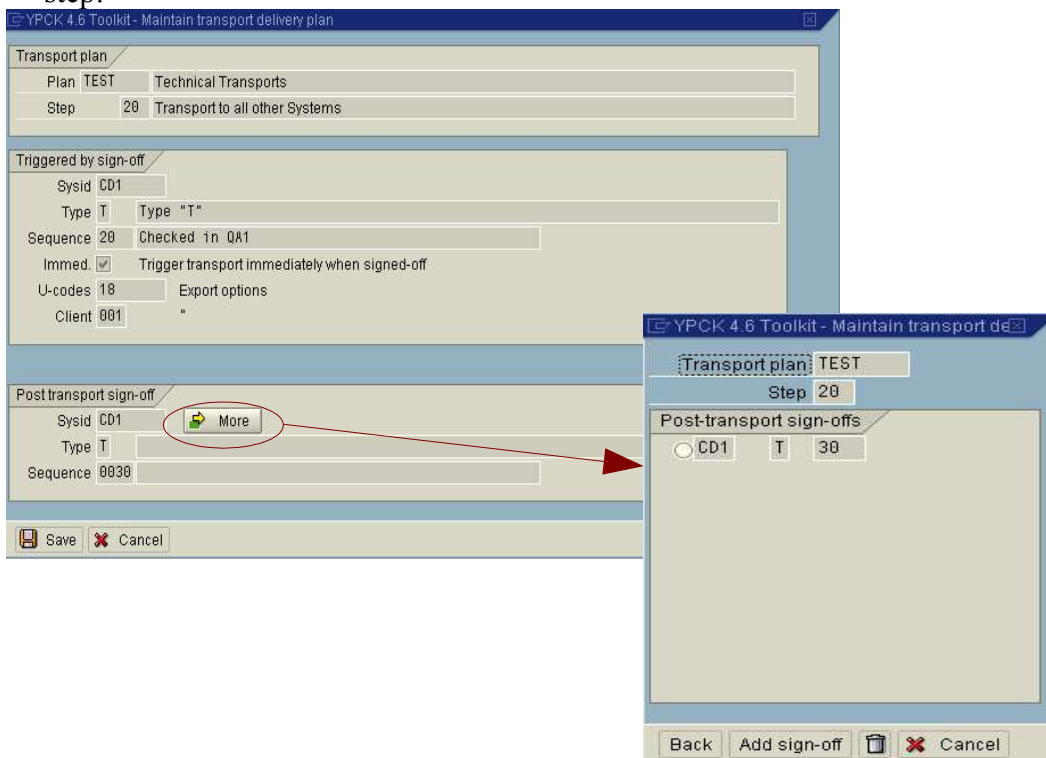


## 10 Enhancement: Multiple post-tp sign-offs

In complex transport environments, it would be useful to post (sign-off) more than one sign-off step after a successful import.

This could allow for "networking" of transports, possible to allow to pre-requisite situations.

Definition of multiple post sign-off steps maintained as part of transport plan, for each transport step:



Display of transport-plan enhanced to show multiple PSO signoffs.

## 11 Enhancement: prompt for sign-off comment.

The value is shown when prompting for a comment at work-package sign-off time.

The screenshot shows the 'YPCK 4.6 Toolkit - Maintain Sign-off Flow' dialog box. The title bar reads 'YPCK 4.6 Toolkit - Maintain Sign-off Flow'. The main content area is titled 'Change description of sign-off flow'. It features a text field with the value '500' and a description 'OD was 0010, then 1000'. Below this is a 'Comment' section with three radio buttons: 'at signoff' (selected), 'Enabled', and 'Obligatory'. Under 'at signoff', there is a 'Prompt' text field containing the value 'OD was 0010, then 1000', which is circled in red. Below this is another 'at reset' section with similar radio buttons and a 'Prompt' field. Further down are sections for 'Prerequisite signoff' (System, Type, Sequence), 'Special-object checking' (checkbox for 'Check special-object authorisation-check for this step'), 'Work-package locking' (radio buttons for 'Don't change', 'Lock work-package', 'Unlock work-package'), 'Release option' (radio buttons for 'Don't release', 'Release'), and 'Optional' (radio buttons for 'No', 'Yes', 'Object chg'). There is also a 'Q/A Checklist' section with two empty text fields, a 'Limit sign-off to:' section with checkboxes for 'Users in the work-package' and 'Work-package owner', and an 'Exit ABAP' section with an empty text field. At the bottom, there are icons for 'Save', 'Change number', and 'Delete'.

When a signoff is being done, the comment option did not provide a means to prompt the user as to what the comment is for. The sign-off definition has been enhanced to provide such an option, as is in place for reset comments.

## 12 Enhancement: tp-plan display to show active/inactive systems

Transport Plan steps in this system			
SysId(CD1) Transport plan: SUPPORT Production enhancement delivery			
Trigger export:	0010	Ready for unit test	Export from client: 200
		Target: CD1-220	✓ active
		Target: CD1-230	✓ active
Post after imp:	0015	Transport complete for unit test	
	0020	Development complete	
Trigger export:	0025	TCC technical checks	Export from client: 200
		Target: QA1-200	✓ active
Post after imp:	0040	Imported in QA1	
Trigger export:	0050	Implemented across complete landscape	Export from client: 200
		Target: CD1-201	✓ active
		Target: CD1-221	✓ active
		Target: QA1-221	✓ active

## 13 Enhancement: new exit for post-transport handling

It would be useful to send a notification when a transport is complete.

This has been implemented as an exit after a transport is done.

New system parameter: EXIT\_POST\_TRANSPORT

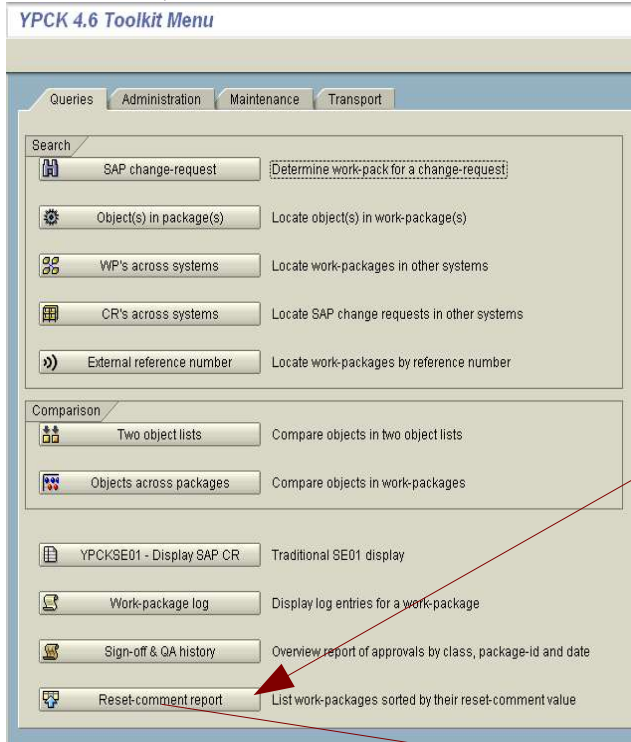
Sample abap: YPCKXPOS.



## 14 Enhancement: new report of WPs by reset comment

Some customers (eg. NCH) use the reset comment to record a deviation-report number.

A new report is delivered to provide a list of selected work-packages ordered by the reset comment, to see where it has been used.



New option in toolkit  
"Queries" tab



Selection screen

YPCK0673/ver4.6.00  
Sysid:SB1,client(001)

Work-packages by Reset Comment

Wk-Pkg	Class	Reset information
CD101432	SUPPORT 09_PSM_HBO_Batch management development_AA1603_031106	09.02.2004 13:34:36 BRONCH1
<b>2b1_DR_NY_0181</b>		
CD101435	CHN-LATE 00_PSM_CBA_Manugistics_devs_AA1606_031111	10.02.2004 18:02:38 HARTLST1
<b>2b1_DR_NY_0183</b>		
CD101205	CHN-PSM 00_PSM_CBR_wmpp.abap_AA1509_030523	10.02.2004 10:53:52 BRONCH1
CD101205	CHN-PSM 00_PSM_CBR_wmpp.abap_AA1509_030523	25.02.2004 18:58:13 BRONCH1
CD101205	CHN-PSM 00_PSM_CBR_wmpp.abap_AA1509_030523	26.02.2004 10:53:17 BRONCH1
<b>2b1_DR_NY_0184</b>		
CD101331	CHN-SAL 09_CCC_LBJ_Shipping_output_AA1573_030826	10.02.2004 17:50:48 HARTLST1
<b>2b1_DR_NY_0188</b>		
CD101498	CHN-LATE 09_PSM_CBA_CFR_Part11_Audit_Trails_AA1626_031212	12.02.2004 15:11:44 GRADWGE1
CD101498	CHN-LATE 09_PSM_CBA_CFR_Part11_Audit_Trails_AA1626_031212	16.02.2004 17:02:58 GRADWGE1